

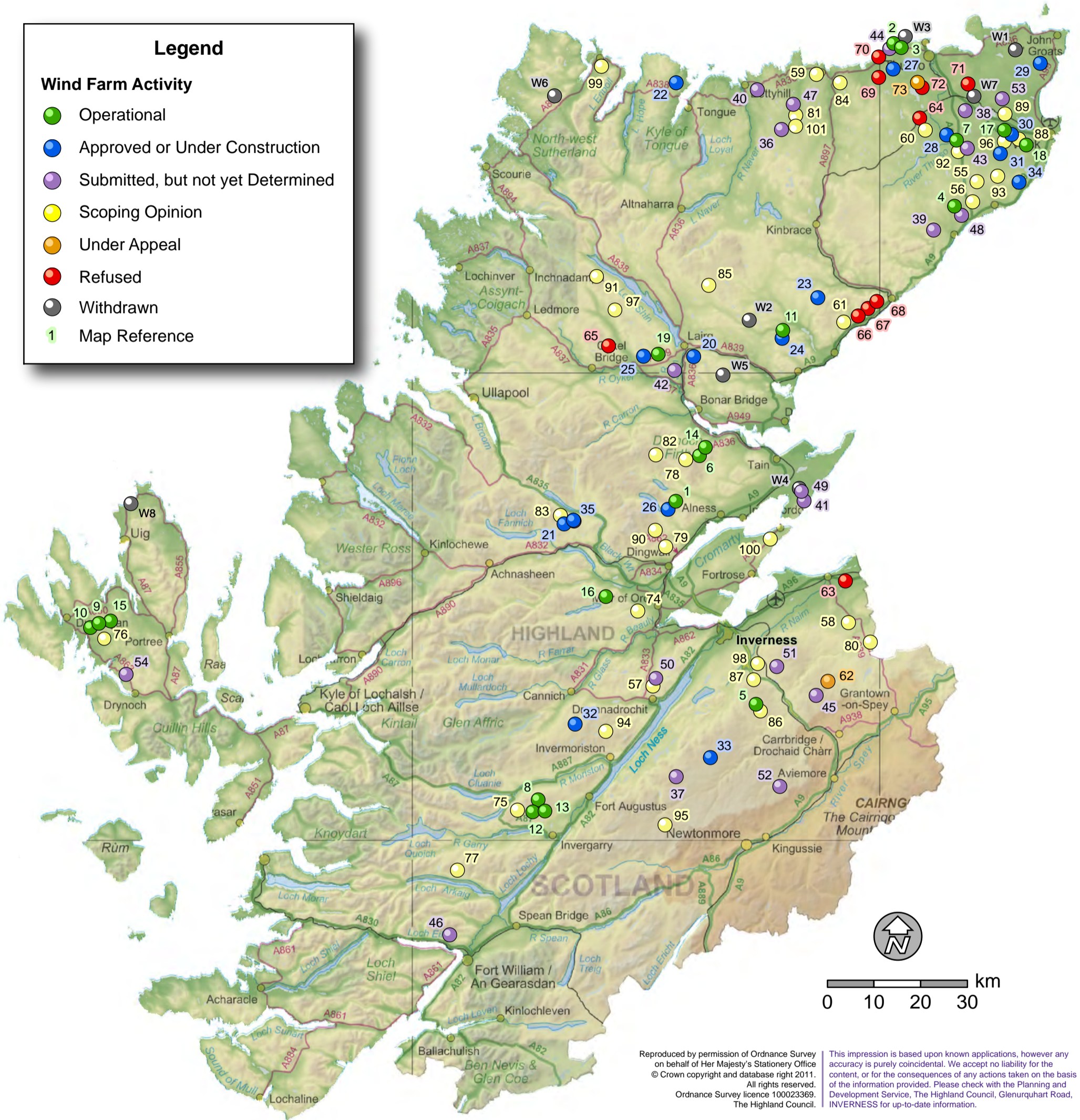
Highland Wind Farm Activity – August 2011

Aithisg Tuath Gaoithe – An Lùnastal 2011

Legend

Wind Farm Activity

- Operational
- Approved or Under Construction
- Submitted, but not yet Determined
- Scoping Opinion
- Under Appeal
- Refused
- Withdrawn
- 1 Map Reference



Reproduced by permission of Ordnance Survey on behalf of Her Majesty's Stationery Office © Crown copyright and database right 2011. All rights reserved. Ordnance Survey licence 100023369. The Highland Council.

This impression is based upon known applications, however any accuracy is purely coincidental. We accept no liability for the content, or for the consequences of any actions taken on the basis of the information provided. Please check with the Planning and Development Service, The Highland Council, Glenurquhart Road, INVERNESS for up-to-date information.

Wind Farm News

The Energy Minister Fergus Ewing announced the launch of a new tool for developers to calculate more accurately the carbon savings from onshore wind farms. The Highland MSP is also investigating standards of visualisation used by developers in wind farm applications.

Construction is progressing at Gordonbush with turbine deliveries underway since the end of this month.

SSE submitted an application for a Converter Station near Spittal, as part of their infrastructure up-grading project which will eventually see a high voltage cable going out to a Moray Firth hub.

Bright Spark Energy and MacWind caused a stir with their idea for a 3 turbine project which could have blade tip heights of 100m, near Davidston, Cromarty, .

The conjoined hearing of Tom nan Clach Appeal and Glenkirk Inquiry of this month will end in September. The Dunbeath Inquiry (17 turbines) which opened in July, is suspended, it may re-open in September. The Druim ba proposal is scheduled to be considered at the Planning Committee in September.

Please contact us with up-dates or send in photographs that we could publish, we have limited knowledge after the wind farms are approved



Highland Wind Farm Activity - August 2011

Aithisg Tuath Gaoithe - An Lùnastal 2011



| REF | LOCATION | DEVELOPER | No. of TURBINES | MW CAPACITY | STATUS |
|-----|--|--|-----------------|-------------|-----------------------------------|
| 1 | Novar, Evanton | RWE npower Renewables | 34 | 17 | Operational |
| 2 | Forss, by Thurso | Renewable Energy Systems (RES) | 2 | 2 | |
| 3 | Forss Phase II | Renewable Energy Systems (RES) | 4 | 5 | |
| 4 | Buolfruch, Houstry, Dunbeath | Anthony Hall | 15 | 12.75 | |
| 5 | Farr, Tomatin | RWE npower Renewables | 40 | 92 | |
| 6 | Beinn Tharsuinn, S of Dornoch Firth | Scottish Power Renewables (SPR) | 17 | 29.75 | |
| 7 | Causeymire | RWE npower Renewables | 21 | 48 | |
| 8 | Millennium, South of Glen Moriston | Renewable Development Co (RDC) | 16 | 40 | |
| 9 | Ben Aketil, Dunvegan | Renewable Development Co (RDC) | 10 | 23 | |
| 10 | Ben Aketil Extension | Renewable Development Co (RDC) | 2 | 4.6 | |
| 11 | Kilbraur, Strath Brora | Renewable Development Co (RDC) | 19 | 47.5 | |
| 12 | Millennium Extension (A) | Millennium Wind Energy Ltd | 4 | 10 | |
| 13 | Millennium Extension (B) | Millennium Wind Energy Ltd | 6 | 15 | |
| 14 | Beinn nan Oighrean, Ardgay | RockBySea and Midfearn Renewables Ltd | 2 | 4.6 | |
| 15 | Edinbane | Vattenfall | 18 | 41.4 | |
| 16 | Fairburn, Marybank | Scottish & Southern Energy (SSE) | 20 | 40 | |
| 17 | Flex Hill, Bilbster | RWE npower Renewables | 3 | 3.9 | |
| 18 | Achairn, Wick | James and Ronald Innes | 3 | 6 | |
| 19 | Achany, Lairg | Scottish & Southern Energy (SSE) | 19 | 38 | |
| 20 | Lairg, SU | Lairg Windfarm Ltd | 3 | 6.9 | |
| 21 | Lochluichart, Garve, RC | LZN Ltd | 17 | 51 | Approved or Under Construction |
| 22 | Melness, SU | Melness Crofters Estate Ltd | 3 | 2.55 | |
| 23 | Gordonbush, Brora, SU | Scottish & Southern Energy (SSE) | 35 | 71.75 | |
| 24 | Kilbraur Extension, Strath Brora, SU | West Coast Energy | 8 | 20 | |
| 25 | Rosehall, SU | E.ON UK Renewables Ltd | 19 | 24.7 | |
| 26 | Novar Extension, RC | RWE npower Renewables | 16 | 36.8 | |
| 27 | Baillie Hill, Westfield, CA | Baillie Wind Farm Ltd | 21 | 52.5 | |
| 28 | Causeymire Extension, CA | RWE npower Renewables | 3 | 7 | |
| 29 | Stroupster, Nybster, CA | RWE npower Renewables | 12 | 36 | |
| 30 | Wathegar, CSER | Danny Miller (Whirlwind Renewables) | 5 | 10 | |
| 31 | Camster, CSER | E.ON UK Renewables Ltd | 25 | 50 | |
| 32 | Glenurquhart & Strathglass Wind Energy Project, INBS | Corrimony Energy Ltd and Soirbheas Ltd | 5 | 10 | |
| 33 | Dunmaglass, Strathnairn, INBS | Renewable Energy Systems (RES) | 33 | 99 | |
| 34 | Burn of Whilk, East Clyth, CSER | RWE npower Renewables | 9 | 27 | |
| 35 | Corriemoillie, Garve, RSL | E.ON UK Renewables Ltd | 19 | 47.5 | |
| 36 | Strathy South, Strathy, SU | Scottish & Southern Energy (SSE) | 77 | 177 | Submitted, but not yet Determined |
| 37 | Corriegarh, Gorthleck, IN | North British Windpower | 20 | 49 | |
| 38 | Spittal Hill, Spittal, CA | Spittal Hill Wind Farm Ltd | 30 | 77.5 | |
| 39 | Dunbeath, CA | West Coast Energy | 17 | 51 | |
| 40 | Bettyhill, SU | North British Windpower | 2 | 5 | |
| 41 | Nigg, RC | Falck Renewables Ltd | 5 | 10 | |
| 42 | Braemore, Lairg, CSER | Braemore Wind Ltd | 27 | 81 | |
| 43 | Halsary, CA | Scottish Power | 18 | 41.4 | |
| 44 | Forss Wind Farm Extension (Phase III), CSER | Renewable Energy Systems (RES) | 5 | 6.5 | |
| 45 | Glenkirk, Tomatin, INBS | Eurus Energy UK Ltd | 26 | 78 | |
| 46 | Druim Fada, Locheil, LO | North British Windpower | 4 | 10 | |
| 47 | Strathy North, Strathy, SU | Scottish & Southern Energy (SSE) | 33 | 76 | |
| 48 | Upper Smerral Wind Cluster, CSER | Caithness Power | 4 | 3.2 | |
| 49 | Cullisse, Nigg, CSER | K Mackenzie | 1 | 0.3 | |
| 50 | Druim Ba, Drumnadrochit, INBS | Druim Ba Sustainable Energy | 23 | 69 | |
| 51 | Moy Wind Farm, INBS | Carbon Free Developments | 20 | 41 | |
| 52 | Allt Duine, INBS | RWE npower Renewables | 31 | 93 | |
| 53 | Plover Hill, Bower | R Mackay | 1 | 0.5 | |
| 54 | Sumardale Croft, Struan | A Dalton | 1 | 0.8 | |
| 55 | Rumster, CA | Rumster Community Wind Energy Project | 3 | 9 | |
| 56 | Nottingham Mains, CA | Ian Sinclair | 2 | 4.6 | |
| 57 | Abriachan, IN | Abriachan Forest Trust | 1 | 1.5 | |
| 58 | Achagour, Ardclach, NA | Wind Hydrogen Ltd | 5 | 6.5 | |
| 59 | Melvich, SU | Fountain Forestry | 6 | 10 | |
| 60 | Westerdale, CA | Scottish Power | 50-60 | 135 | |
| 61 | Crackaig, SU | Wind Hydrogen Ltd | 7 | 14 | |
| 74 | Auchmore, Muir of Ord, IN | RWE npower Renewables | 5-7 | 12-21 | |
| 75 | Beinneun, Invergarry, INBS & RSL | Ridgewind | 25 | 50+ | |
| 76 | Glen Ullinish, SL | Community Wind Farm Alliance | 21 | 49 | |
| 77 | Arkaig, LO | North British Windpower | 91 | 118 | |
| 78 | Coire na Cloiche, Strath Rusdale, SU | RockbySea | 13 | 29.9 | |
| 79 | Drynie, Dingwall, RC | RockbySea | 2 | 4.6 | |
| 80 | Cairn Duhie, Ferness, NA | RES | 24 | 32 | |
| 81 | Strathy Forest, SU | Chester J Kelly | 21 | 54 | |
| 82 | Glenmorrie, Bonar Bridge, CSER | Wind Energy (Glenmorrie) | 40 | 120 | |
| 83 | Lochluichart Extension, Garve, RSL | LZN Ltd | 13 | 29.9 | |
| 84 | Ackran, Melvich, SU | SSE Renewables | 15 | 30 | |
| 85 | Dalnessie, Lairg, CSER | SSE Renewables | 35 | 50+ | |

(continued)

| REF | LOCATION | DEVELOPER | No. of TURBINES | MW CAPACITY | STATUS |
|-----|--|--|-----------------|-------------|-----------------|
| 86 | Kyllachy, Tomatin, INBS | RWE Npower Renewables | 19 | 38-57 | Scoping Opinion |
| 87 | Daviot, INBS | West Coast Energy | 10 | 33 | |
| 88 | Wathegar Phase II, CSER | Whirlwind Renewables | 6-9 | 12-27 | |
| 89 | Cogle Moss Wind Cluster, Bilbster, CSER | Muirden Energy | 7 | 16 | |
| 90 | Clach Liath Wind Farm, Evanton, CSER & RSL | Falck Renewables Plc / Coriolis Energy | 17 | <50 | |
| 91 | Sallachy Wind Farm, Lairg, CSER | WKN Windkraft Nord AG (WKN) | up to 30 | 90 | |
| 92 | Bad á Cheò, Mybster, CSER | RWE npower Renewables | 13 | 33 | |
| 93 | Camster Forest, CSER | Simon Hutchen | 16-20 | | |
| 94 | Balmacaan, Invermoriston, INBS | SSE Renewables | up to 138 | 50+ | |
| 95 | Stronelaig, Fort Augustus, INBS | SSE Renewables | | 50+ | |
| 96 | West of Flex Hill, Flex, Watten, CSER | Environsol | 3 | 6-9 | |
| 97 | Glencassley, Lairg, CSER | SSE Renewables | | 150+ | |
| 98 | Craggie, Daviot, IN | West Coast Energy | 3 | 7.5 | |
| 99 | Durness, SU | Durness Development Group Ltd | 2 | 0.33 | |
| 100 | Cromarty Cluster, Davidston | Bright Spark Energy | 3 | 7 | |
| 101 | Strathy Wood, west of Dalhalvaig | Eon Climate and Renewables | 28 | 84 | |
| 62 | Tom nan Clach, Tomatin, INBS | Infinergy | 17 | 39.1 | Under Appeal |
| 73 | Hill of Lieurary II, Westfield, CSER | Scotrenewables plc | 2 | 4 | Refused |
| 63 | Broombank, Auldearn, INBS | J Scott | -1 | -1 | |
| 64 | Olgrinmore, CSER | L Aitkenhead | -2 | -5 | |
| 65 | Invercassley, Lairg, CSER | Airricity Devts UK Ltd | 25 | -50 | |
| 66 | West Garty, Helmsdale, CSER | Micon UK Ltd | -16 | -12 | |
| 67 | Gartymore, Helmsdale, CSER | RES | -14 | -11 | |
| 68 | Crakaig, Loth, Helmsdale, CSER | Border Wind Ltd | -8 | -5 | |
| 69 | South Shebster, CSER | Mr & Mrs C W Sutherland | 0 | -10 | |
| 70 | Borrowston, Dounreay, CSER | Scottish Power | -10 | -17 | |
| 71 | Durran Mains, Durran, CSER | SSE Renewables | -13 | -19.5 | |
| 72 | Hill of Lieurary, Westfield, CSER | Scotrenewables plc | -3 | -8 | |
| W1 | Scoolary, CA | British Energy | 48 | 120 | Withdrawn |
| W2 | Strath Brora (West), SU | RDC | 23 | 46 | |
| W3 | Forss Extension (W), CA | Fivestone Ltd | 2 | 2 | |
| W4 | Cullisse, RC | Wind Prospect Ltd | 6 | 5 | |
| W5 | Cambusmore, SU | Renewable Energy Systems (RES) | 33 | 49.5 | |
| W6 | Farmheall Hill, Durness, SU | Mr Elliot | 3 | 6 | |
| W7 | Bower Quarry, CA | J Gunn | 1 | 1 | |
| W8 | South of Kilmuir toilets | Mr H MacDonald | 1 | 0.9 | |

Errors and Omissions Excepted

